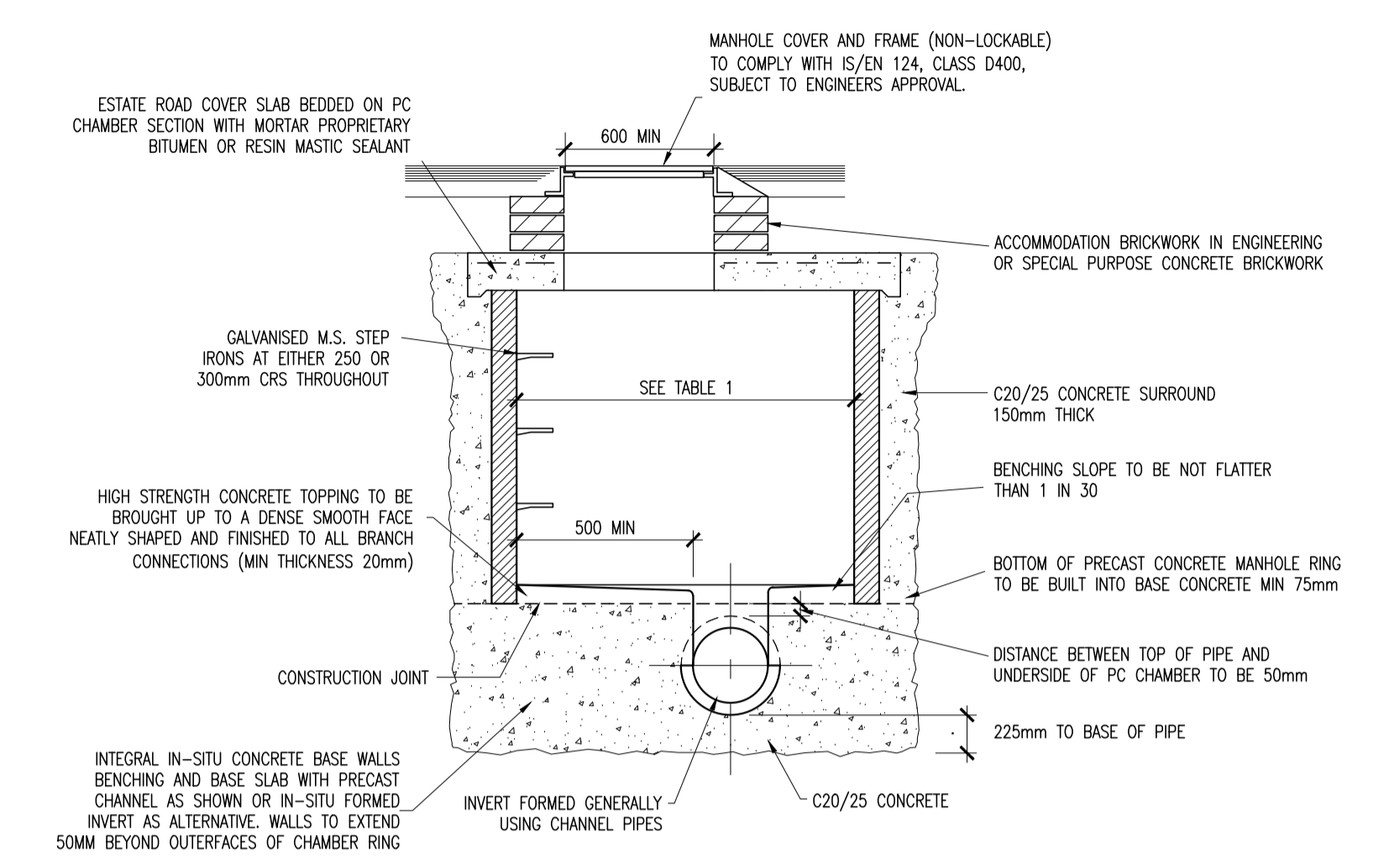
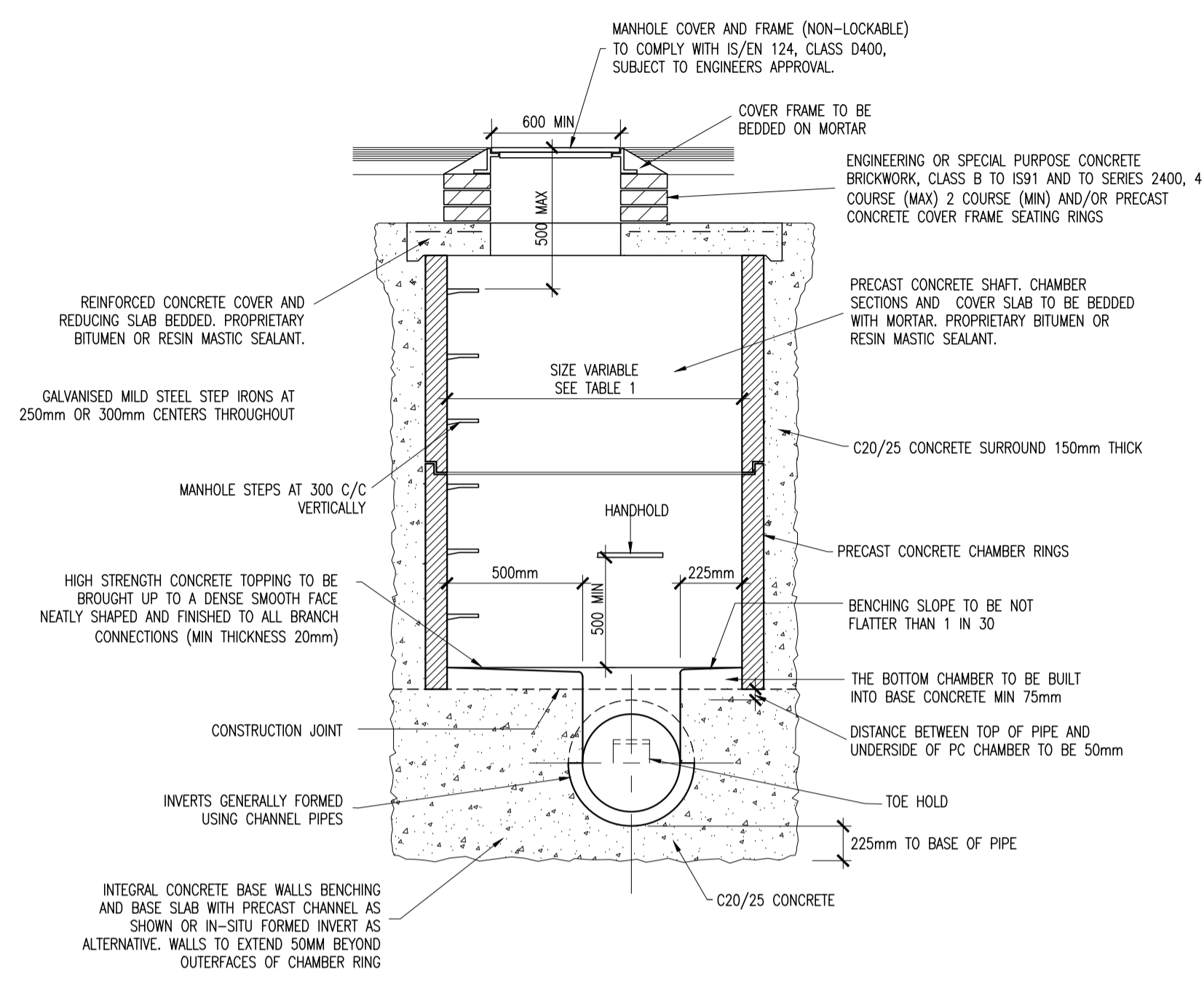
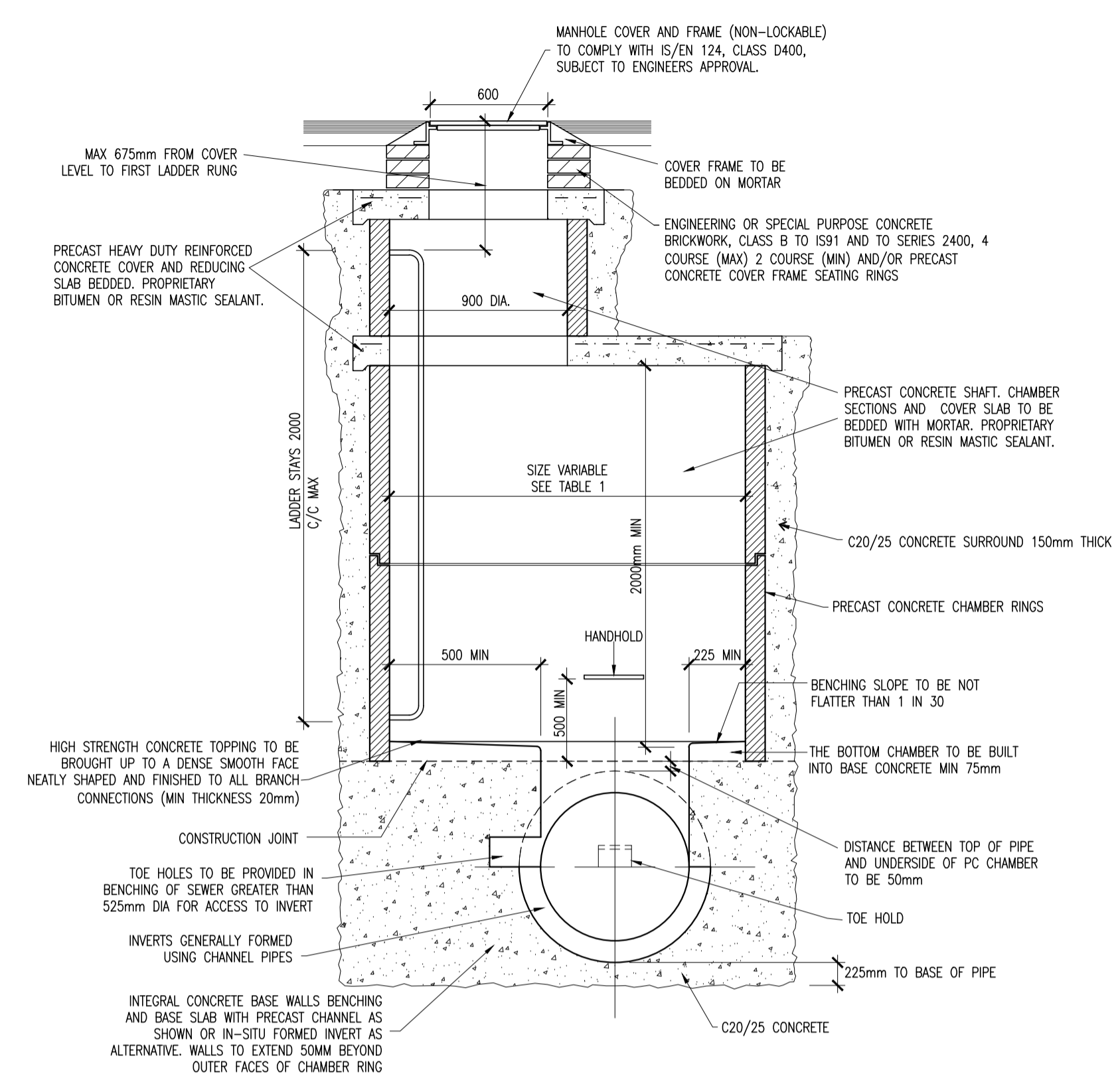


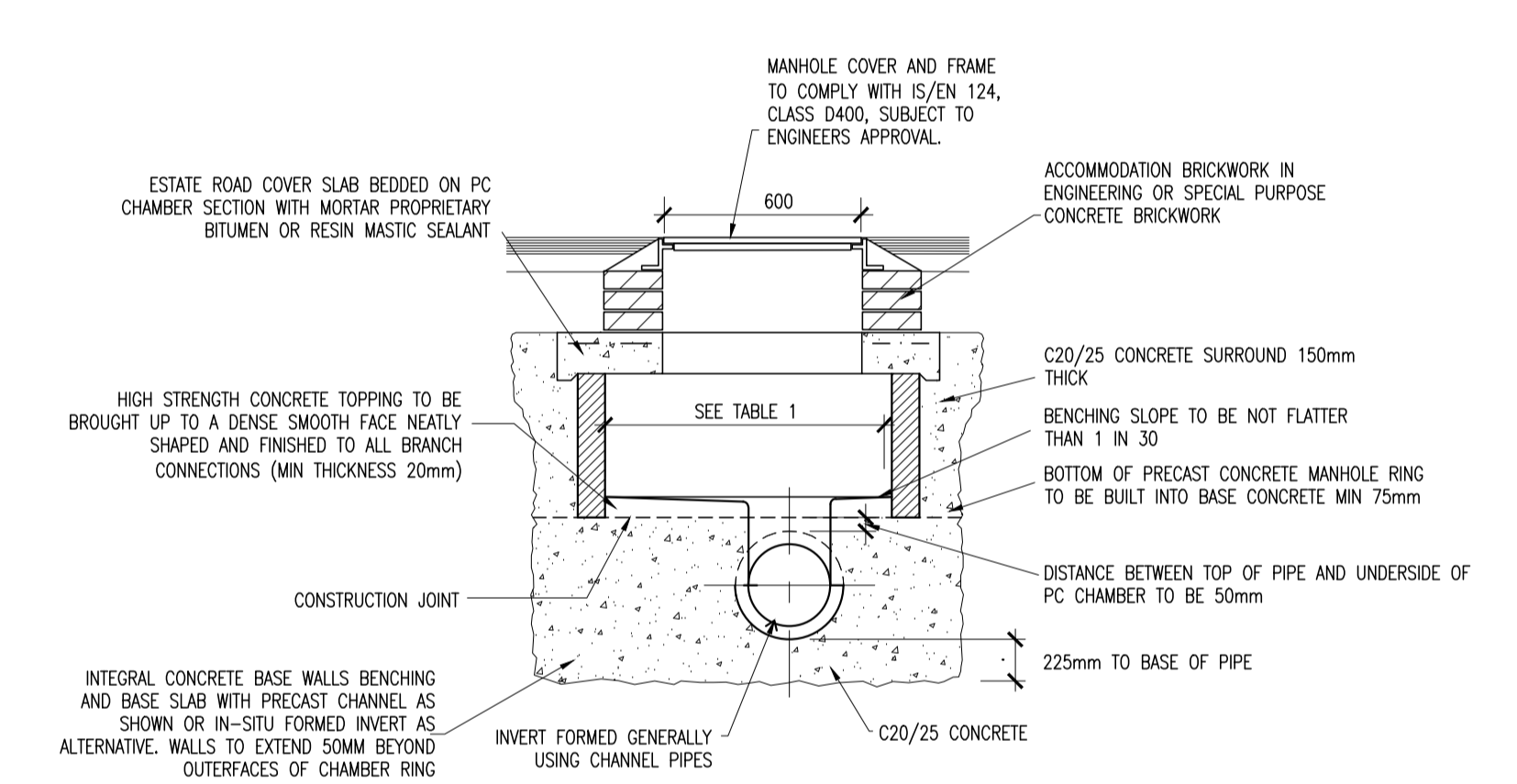
- C20/25 CONCRETE TO HAVE A MINIMUM CEMENT CONTENT OF 280kg/m<sup>3</sup>, MAXIMUM WATER/CEMENT RATIO OF 0.65 AND SLUMP CLASS S2.
- C25/30 CONCRETE TO HAVE A MINIMUM CEMENT CONTENT OF 280kg/m<sup>3</sup>, MAXIMUM WATER/CEMENT RATIO OF 0.65 AND SLUMP CLASS S2.
- C40/50 CONCRETE TO HAVE A MINIMUM CEMENT CONTENT OF 400kg/m<sup>3</sup>, MAXIMUM WATER/CEMENT RATIO OF 0.45 AND SLUMP CLASS S3.
- WHERE CLASS 6F1/6F2 CAPPING MATERIAL IS PROPOSED WITHIN 500mm OF CONCRETE OR STEEL, CLASS 6N TO BE USED INSTEAD.
- WHERE FOOTPATHS ARE LOCATED ADJACENT TO ROADS, C40/50 CONCRETE TO BE USED. ALTERNATIVELY, FOOTPATHS LOCATED BEHIND VERGES C25/30 CONCRETE MAY BE USED.

**NOTE:**  
ALL WORKS & SPECIFICATIONS TO BE UNDERTAKEN IN ACCORDANCE WITH

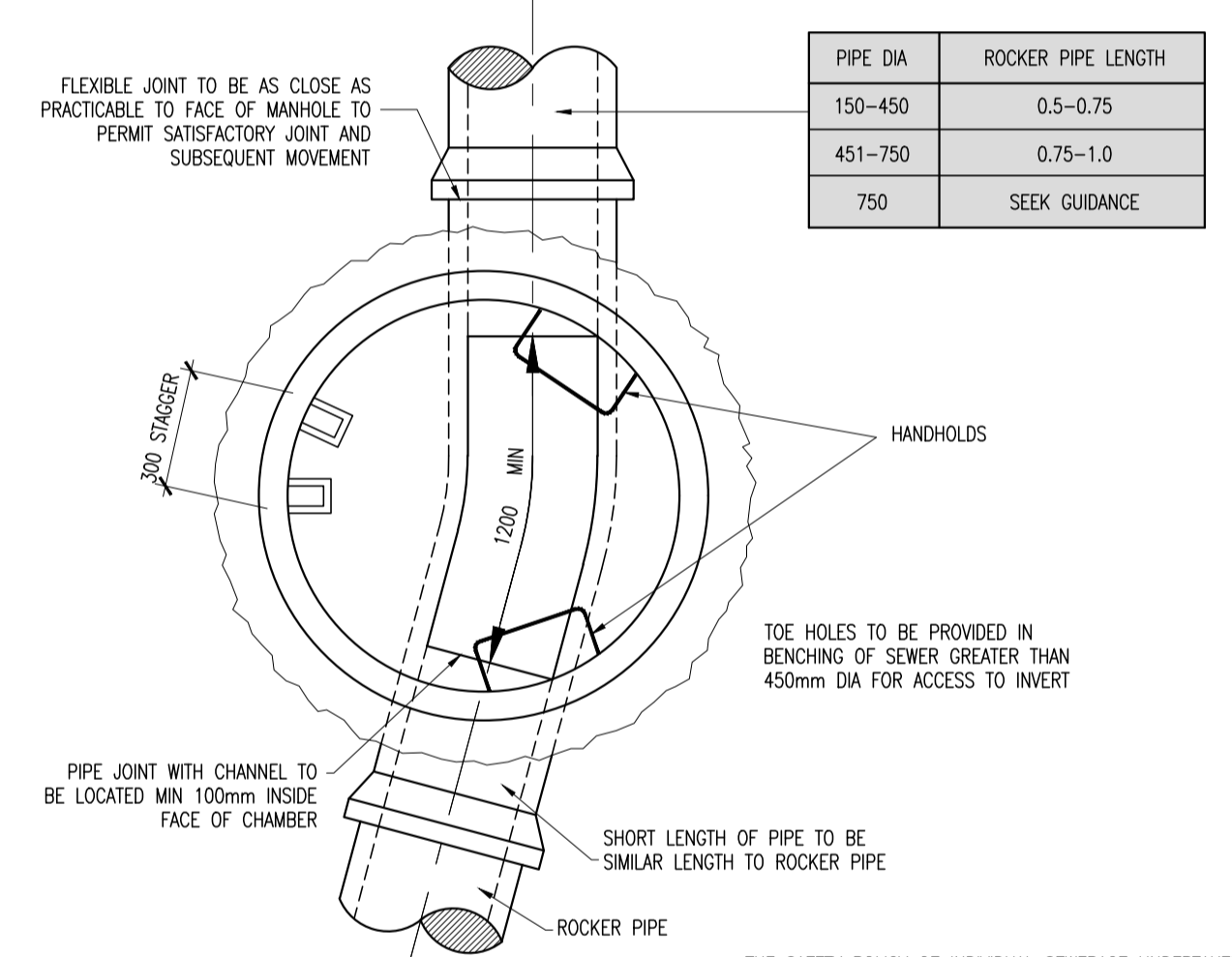
- NRA SPECIFICATION FOR ROADWORKS
- GREATER DUBLIN CODE OF PRACTICE FOR DRAINAGE WORKS
- RECOMMENDATIONS FOR SITE DEVELOPMENT WORKS



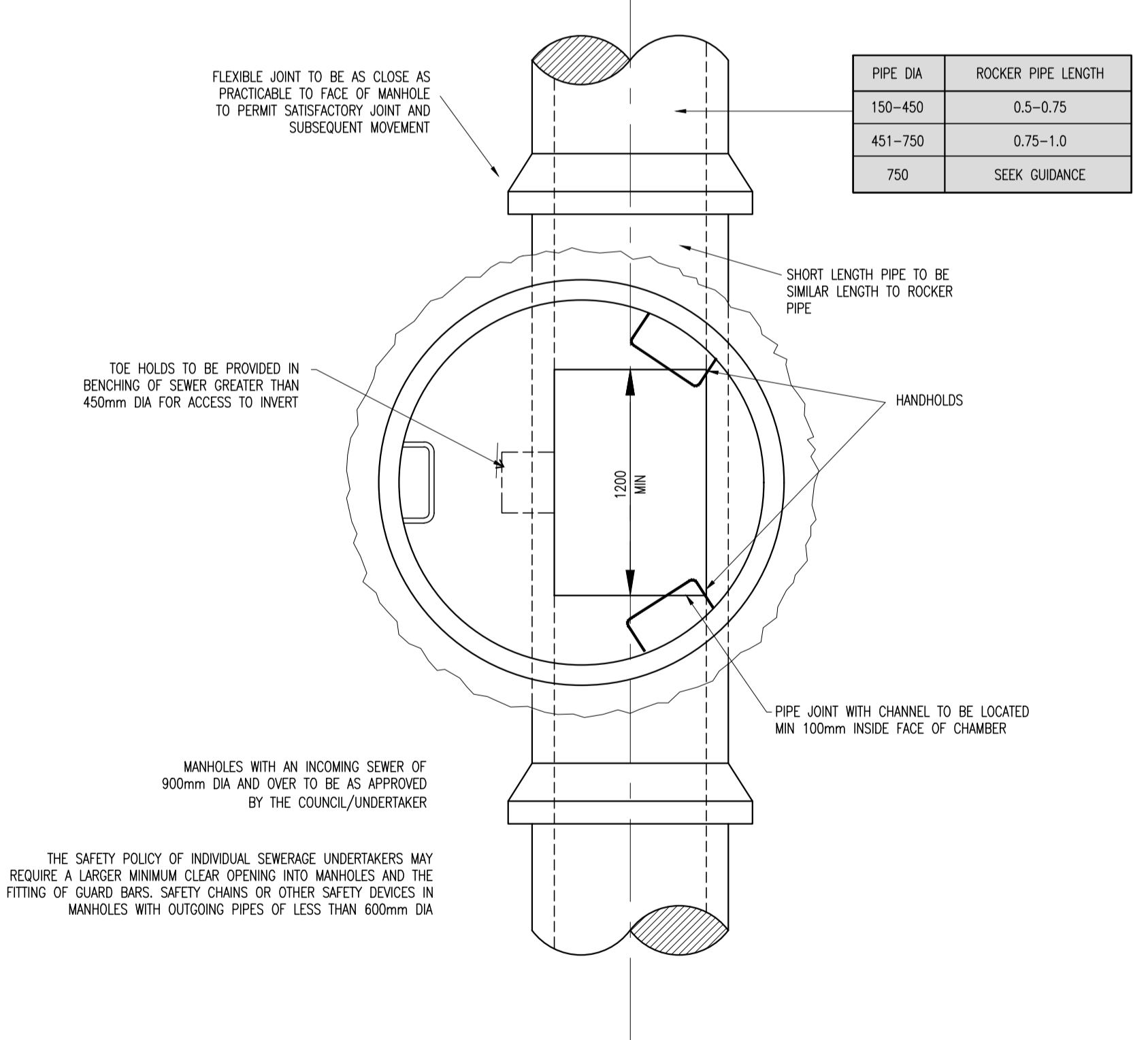
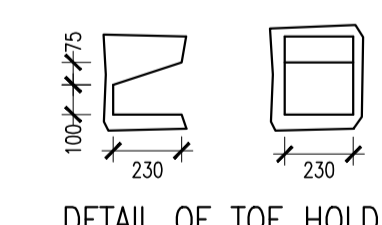
**TYPICAL MANHOLE DETAIL**  
[DEPTH TO SOFFIT 1.0 TO 1.35m]



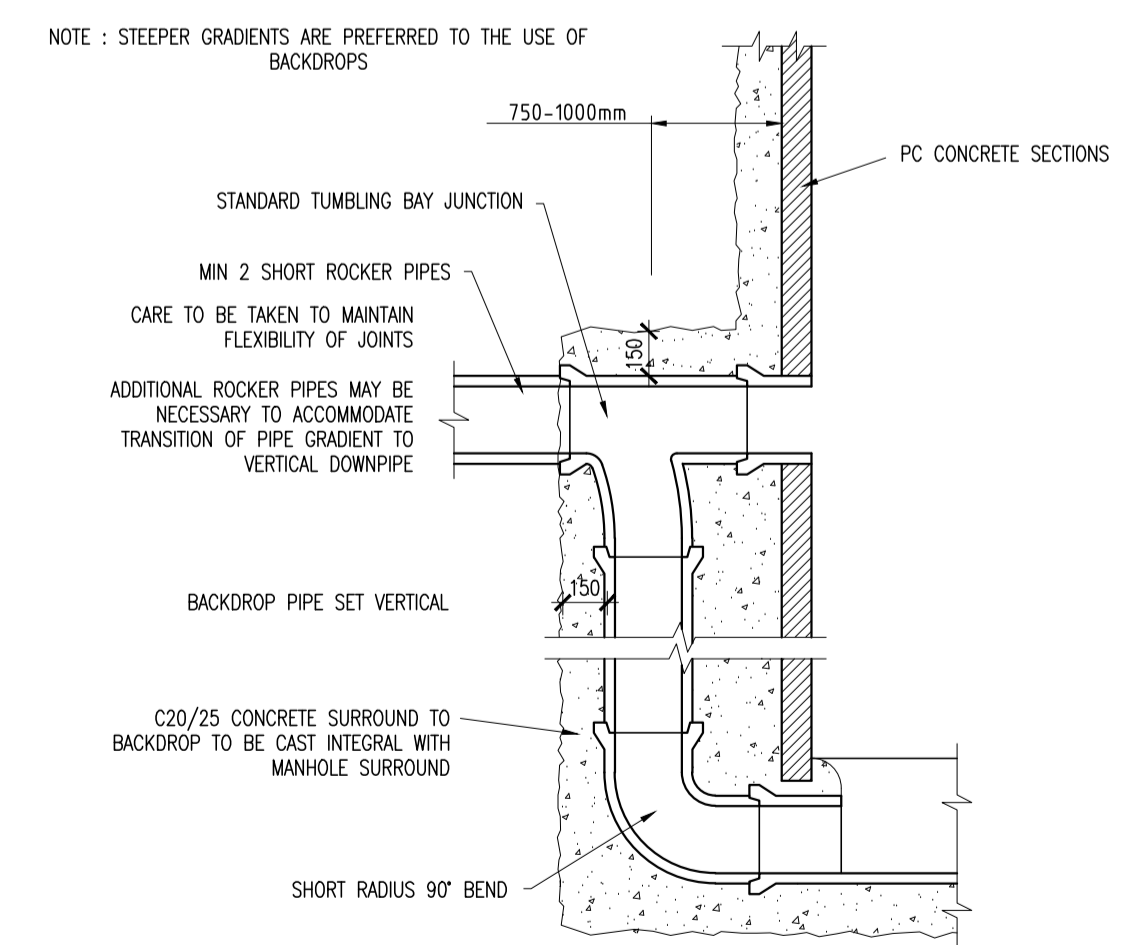
**TYPICAL MANHOLE DETAIL**  
[DEPTH TO SOFFIT LESS THAN 1.0m]



**TYPICAL MANHOLE DETAIL**  
[DEPTH TO SOFFIT 1.35 TO 3m]



**TYPICAL MANHOLE DETAIL**  
[DEPTH TO SOFFIT 3 TO 6m]



**TYPICAL VERTICAL BACKDROP DETAIL**

DIAMETER OF LARGEST PIPE IN MANHOLE (mm)	CHAMBER SECTION DIAMETER (mm)		
	1m - 3m	3m - 6m	6m - 12m
LESS THAN 375	1050	1050	1500
<600	1200	1200	1500
<675	1350	1350	1500
<750	1350	1500	1500
<900	1500	1500	1500
<1200	2100	2100	2100

**TABLE 1**

ORDNANCE SURVEY IRELAND LICENCE  
No EN 0017920  
© ORDNANCE SURVEY IRELAND  
GOVERNMENT OF IRELAND

PO5	09-03-20	SHD SUBMISSION	RTM	SVC
PO4	03-03-20	SHD SUBMISSION	RTM	SVC
PO3	12-04-19	ISSUED FOR PRE-APP	APW	SVC
PO2	08-04-19	ISSUED FOR PRE-APP	OAS	SVC
PO1	15-03-19	ISSUED FOR INFORMATION	APW	SVC
rev	date	description	by	chkd.

client approval

A - Approved  
B - Approved with comments  
C - Do not use

suitability **S2 - SUITABLE FOR INFORMATION** issue purpose **PLANNING**

**DBFL Consulting Engineers**  
Civil, Structural & Transportation Engineering www.dbfl.ie

DUBLIN OFFICE Ormond House, Upper Ormond Quay, Dublin 1, Ireland.  
PHONE +353 1 400 4000

WATERFORD OFFICE Unit 2, The Chandlers, 1-7 Connel Street, Waterford, Ireland.  
PHONE +353 51 909 500

project ref.  
**RESIDENTIAL DEVELOPMENT AT SANTA SABINA, GREENFIELD ROAD, SUTTON, DUBLIN 13**

drawing title  
**STANDARD DETAILS SHEET 1 OF 6**

client  
**PARSIS LTD**

designed by **SVC** author **RTM** scale **VARIES** sheet size **A1**

drawing no. **190008-DBFL-XX-XX-DR-C-3010** revision **P05**