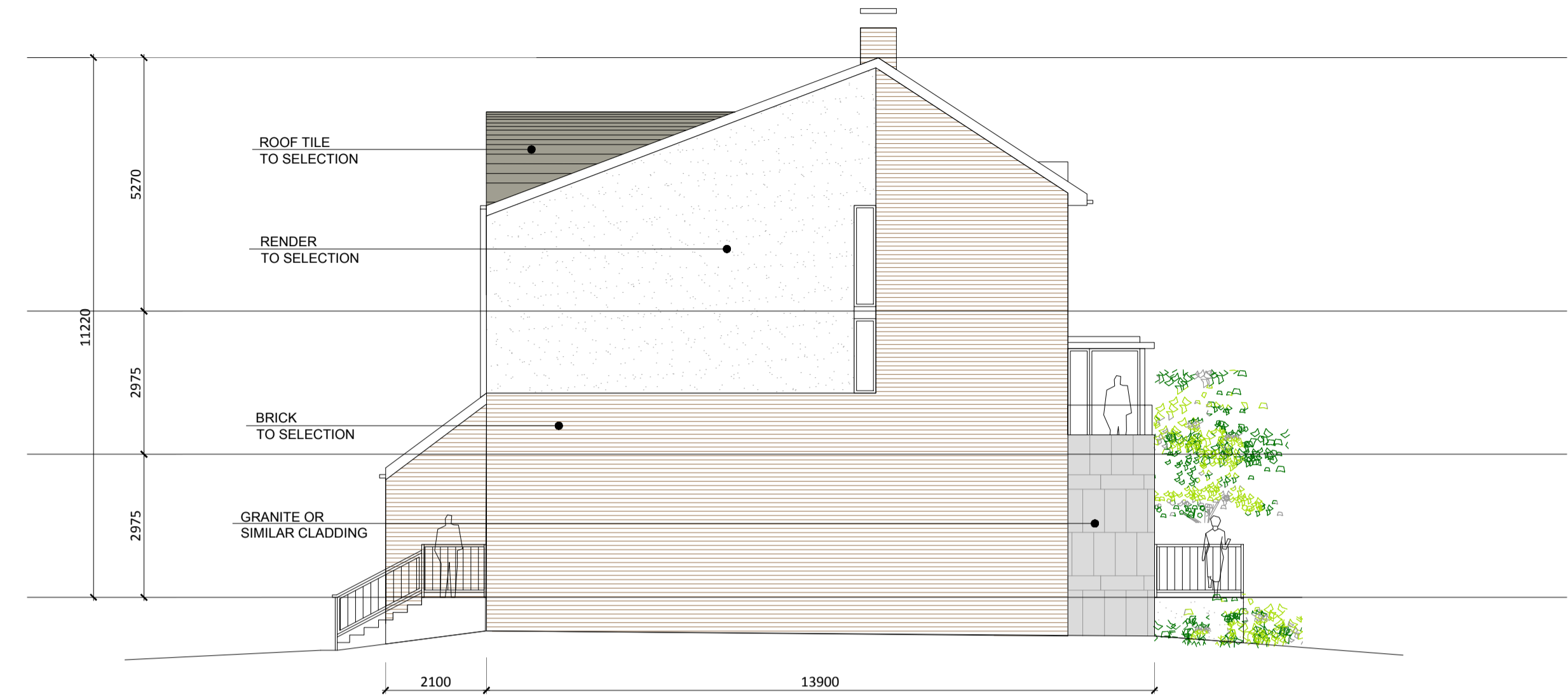




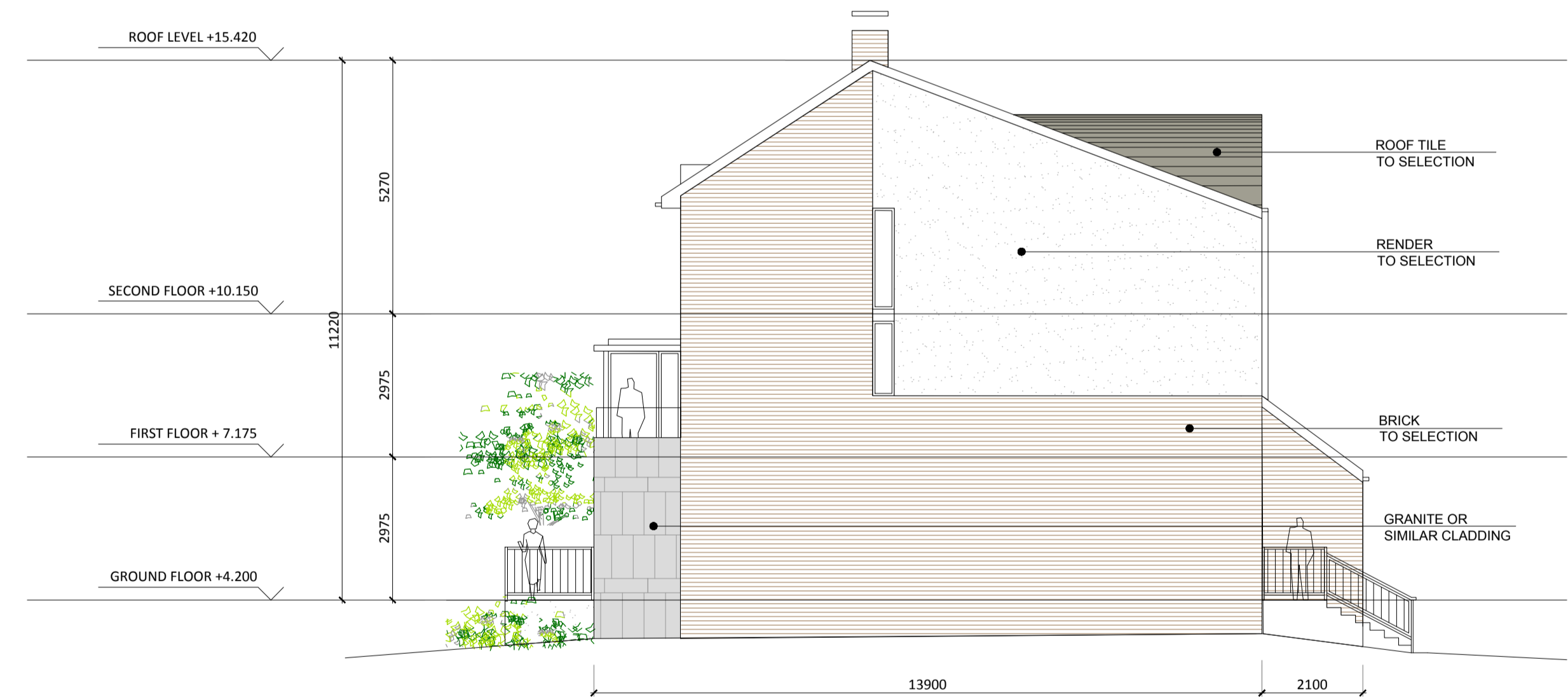
BLOCK D2 - SOUTH ELEVATION APPROVED



BLOCK D2 - WEST ELEVATION APPROVED

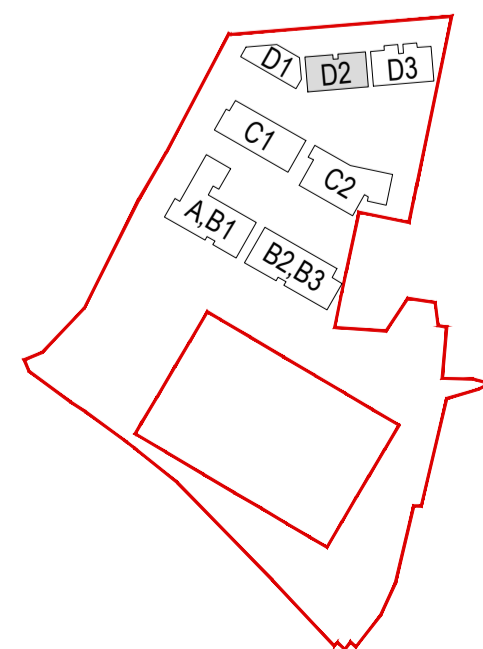


BLOCK D2 - NORTH ELEVATION APPROVED



BLOCK D2 - EAST ELEVATION APPROVED

Block D2 Elevations Approved



Revision Description	Date	Rev. No.	Issued by
ISSUED FOR SHD APPLICATION	27-02-2020	P1	AD

omahony pike

architecture | urban design **Dublin** **Cork**
 email: info@omahonypike.com The Chapel 26 South Mall
 tel: +353 1 202 7400 Mount St. Anne's Cork City
 fax: +353 1 283 0822 Milltown, Dublin 6 Co. Cork
 www.omahonypike.com D06 XN52 Ireland T12 R2RV Ireland

Project No.: 0638A Scale @ A1: 1:100
 Project Lead: MH Date Printed: 27-02-2020
 Drawn By: AD Current Rev.: P1
 Model No.: 0638-OMP-ABD-ZZ-DR-A-2100
 Purpose: PL

Project: Santa Sabina SHD - Proposed Amendments To Reg. Ref; F17A/0615
 Location: Site At Santa Sabina Dominican College, Greenfield Road, Sutton, Dublin 13
 Client: Parsis Ltd

Drawing Title: Approved Block D2 - Elevations
 Drawing No.: 0638-OMP-ABD-ZZ-DR-A-2107

Figured dimensions only to be used. This drawing is copyright of O'Mahony Pike Architects Ltd. All information is shared as per approved use in accordance with BS1192(2007) + A2(2016), Table 5; Standard Codes for Suitability of Models and Documents. If 'Information Approval Check' is empty, this information has been shared at S0 - WIP.

Suitability - Checked By - Date